



7V-2 QT. BAKER-4.50



7FL-10" PLATE-2.50

7F-9" PLATE-2.00

7G-7" PLATE-1.25

7E-5" SAUCER-1.20



7D-2 QT. PITCHER-4.00



7W-3 QT. BAKER-6.00



7B-SUGAR WITH LID-2.00



7A-6 OZ. CREAMER-1.50



7C-CUP-1.20



7M-14 OZ. MUG-1.80



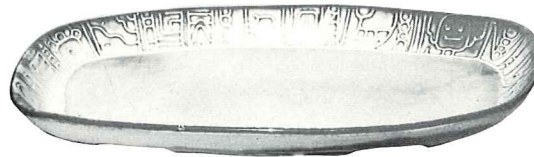
7CL-8 oz. MUG-1.50



7XO-8 OZ. FRUIT-1.00



7U-10 OZ. BAKER-2.00



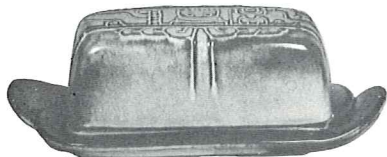
7QS-13" STEAK PLATTER (SHALLOW PLATTER)-2.50



7HS-SALT & PEPPER-2.00



7X-14 OZ. CHILI-SOUP-1.25



7K-BUTTER DISH-2.50



7Q-13" DEEP PLATTER-3.50



7XL-20 OZ. SALAD-1.50



7PS-9" TRAY-1.50



7FC-15" CHOP PLATE-10.00



7N-1 QT. VEGETABLE BOWL-2.00



7T-6 CUP TEAPOT-3.50



7P-17" AZTEC OVAL PLATTER-7.50



7J-2 CUP TEAPOT-2.50